

Tinytag Shuttle Quick Start Guide

www.tinytag.info

data collection & retrieval » temperature » humidity » shock » vibration » count » voltage » current

Gemini Data Loggers (UK) Ltd.
Scientific House, Terminus Road, Chichester, West Sussex, PO19 8UJ, England
t: +44(0)1243 813000 f: +44(0)1243 531948 e: sales@tinytag.info www.tinytag.info

Gemini
DATA LOGGERS



Required Items

PDA Specification

Tinytag Shuttle is designed to run on a PDA or handheld computer with the following specification:

- Windows CE version 5.0 or 6.0.
- An ARM, XScale, or OMAP processor
- A standard 9-pin RS232 port

Other Items

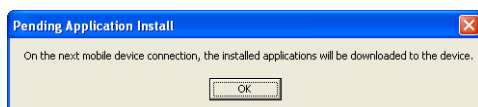
To use the Tinytag Shuttle software you will also need the following:

- A PC running Windows XP, 2000 or Vista and a copy of Microsoft ActiveSync
- A PC to PDA data transfer cable or docking station
- A serial communication cable or inductive pad
- A Tinytag data logger (and any associated probes, where appropriate)
- A copy of the Tinytag Explorer software (to initially configure any data loggers, and to view recorded data).

Installing Tinytag Shuttle

The following instructions assume that the PDA and associated software (including Microsoft ActiveSync) have already been installed and set-up.

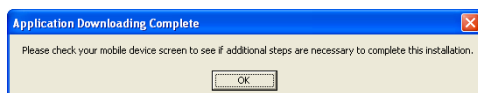
- Insert the Tinytag Shuttle CD into the CD-ROM drive of your computer, this should auto-run after a few seconds (if nothing happens, browse the CD and run the file setup.exe).
- Follow the prompts from the installation wizard.
- When the installation is complete, the following message should be displayed:



Tinytag Shuttle is now ready to be transferred to your PDA.

- Run Microsoft ActiveSync and you will be asked whether you wish to install Tinytag Shuttle, click **Yes**. Tinytag Shuttle will take a few moments to install on the PDA, when complete, click **OK**.

You may then see the following message:



If you do, check your PDA and follow any on-screen prompts displayed.

When the above actions have been completed, Tinytag Shuttle will be installed and ready to use.

Getting Started



Before using Tinytag Shuttle, make sure that the time and date are set correctly on the PDA. When restarting data loggers, Tinytag Shuttle uses the PDAs time and date settings, if these are wrong recorded data will be displayed incorrectly.

Tinytag Shuttle is supported on PDAs that have a standard 9-pin RS232 port.

Data loggers are connected to the PDA using a CAB-0005 or CAB-0007 serial cable, or an ACS-3020 serial inductive pad.

Once installed on a PDA, Tinytag Shuttle can be found in the **Programs** folder on the **Start** menu - simply tap the Tinytag Shuttle icon to run the program.

Initial Set-Up

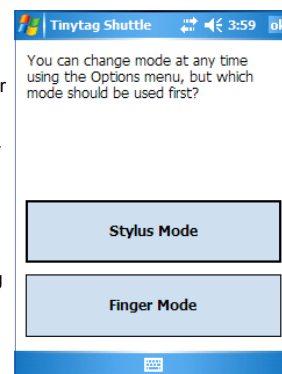
The first time Tinytag Shuttle is run, you will be prompted to choose the display mode you wish to use (display modes can be changed later if required).

Tinytag Shuttle runs in two modes, **Finger Mode** or **Stylus Mode**.

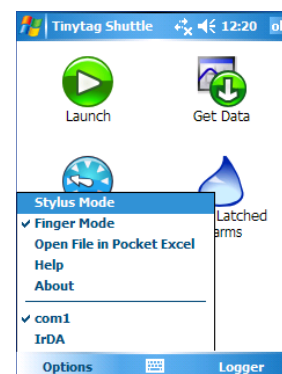
Finger Mode: Finger mode has been designed so that Tinytag Shuttle can be used easily in the field. All options are big enough to be operated using the press of a finger, removing the need for the user to juggle a data logger, PDA and fiddly stylus all at the same time. To make operations easier, filenames are automatically generated by the software.

or

Stylus Mode: Stylus Mode allows full functionality. Instead of automatically generating files names, on launch and offload, it allows the user to enter their own using the PDA text entry.



You can switch between modes by selecting the appropriate entry from the **Options** menu.



Check to ensure that **com1** has been selected on the **Options** menu.

Logger Options

Tinytag Shuttle allows the user to start a data logger recording, to download previously recorded data, to perform a spot check on the unit, to clear latched alarms and to stop a data logger recording.

Launch



To start a data logger recording, tap on the **Launch** icon or select **Launch** from the **Logger** menu.

You will then be presented with two options, **Erase data and Relaunch logger** and **Cancel**.

When restarted, any data previously stored on the logger will be erased. If you have not previously offloaded the data from your logger and need a copy of it, select **Cancel** and then **Get Data** (see below).

Tinytag Shuttle will restart a data logger using the same launch settings (logging interval, measurement property, stop and alarm options) as used on the data loggers previous logging run.

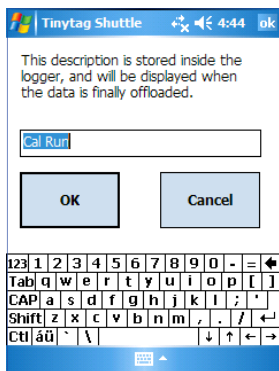
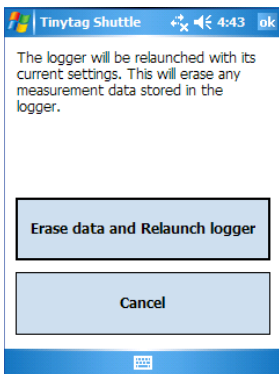


If a new data logger is being used it will need to be configured beforehand using Tinytag Explorer.

In **Finger Mode**, selecting **Erase data and Relaunch logger** will restart your data logger immediately using the launch settings and description from the previous logging run.

In **Stylus Mode**, you will be prompted to enter a new description for the logger before it is started using the other launch settings from the previous logging run.

In both cases, when it is safe to disconnect the data logger from the PDA, Tinytag Shuttle will confirm that the launch is complete.



Get Data



To download recorded data from a logger, tap on the **Get Data** icon or select **Get Data** from the **Logger** menu.

If the data logger is recording in second intervals, you will be prompted to stop it before it is offloaded.

In **Finger Mode**, the data logger will be downloaded and a data file created automatically.

The name of the file generated contains the serial number of the data logger, the date of offload and - in case more than one data file may be created from the same logger in a day - successive data files are numbered 1, 2, 3 etc.

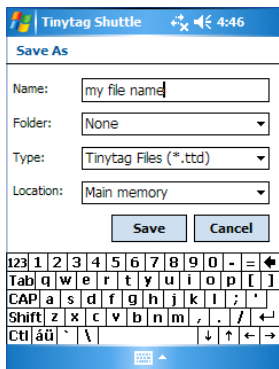
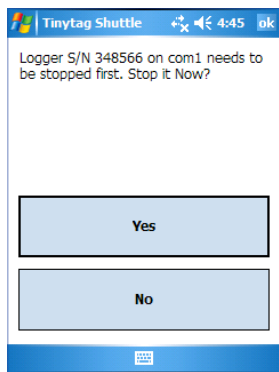
For example:

348566-2008-10-02-2

(serial number-year-month-day-file number)

In **Stylus Mode**, you will be prompted to enter your own file name.

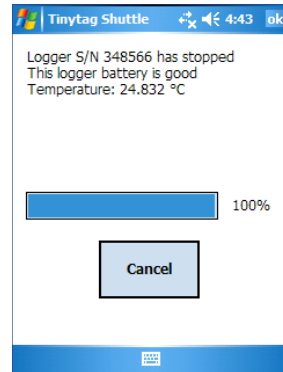
All data is saved in the root folder of the PDA using the Tinytag Explorer .ttd file format.



Current Reading



You can check the current measurement readings from a data logger, and the condition of its battery (model dependant) by tapping the **Current Reading** icon, or selecting **Current Reading** from the **Logger** menu.



Reset Latched Alarms



Tapping the **Reset Latched Alarms** option, or selecting it from the **Logger** menu, will clear any latched alarms that are active on a data logger.

Stopping a Data Logger

To stop a data logger recording, select **Stop** from the **Logger** menu.

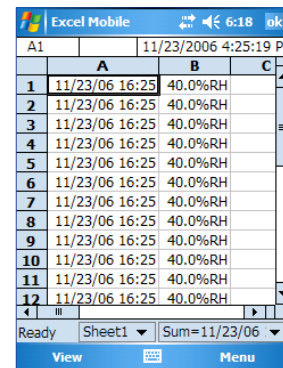
Open a File in Pocket Excel

Tinytag Shuttle allows users to view files using Pocket Excel.

To do this, go to the **Options** menu, select **Open a File in Pocket Excel**, and browse to select the file you wish to view.

The file will then open in Pocket Excel.

To save the file, go to **Menu, File** and **Save As** (this will then be saved in a .xls format).



Transferring Saved Data to a PC

To transfer saved data files from the PDA to your PC, run Microsoft ActiveSync and browse the unit using Windows Explorer. Files can then be copied from the PDA to the PC in the same way as you would sort any other program file.

Further Information

For further information on Tinytag Shuttle please see Tinytag Shuttle's **Help** file. To view this go to **Options** and **Help** in the software.

If you have any questions that are not covered here or in the **Help** file, contact your distributor or:

Gemini Data Loggers (UK) Ltd.
 Scientific House, Terminus Road,
 Chichester, West Sussex,
 PO19 8UJ England.
www.tinytag.info

Sales
 t: +44 (0)1243 813000
 f: +44 (0)1243 531948
 e: sales@tinytag.info

Technical Support
 t: +44 (0)1243 813009
 f: +44 (0)1243 531948
 e: help@tinytag.info

Gemini
 DATA LOGGERS